

2025.7 ~



Oil Pattern Distance:	46 Feet	Reverse Brush Drop:	46 Feet	Oil Per Board:	50 uL
Forward Oil Total:	14.9 mL	Reverse Oil Total:	12.05 mL	Volume Oil Total:	26.95 mL
Forward Boards Crossed:	298 Boards	Reverse Boards Crossed:	241 Boards	Total Boards Crossed:	539 Boards

	Start	Stop	Loads	Speed	Crossed	Start	End	Feet	T.Oil
1	3L	3R	2	14	70	0.0	1.9	1.9	3500
2	8L	8R	3	18	75	1.9	9.5	7.6	3750
3	10L	10R	3	18	63	9.5	17.1	7.6	3150
4	12L	12R	3	18	51	17.1	24.7	7.6	2550
5	14L	14R	3	18	39	24.7	32.3	7.6	1950
6	2L	2R	0	22	0	32.3	46.0	13.7	0

Conditioner:
Type In or Select One

TransferType:
Type In or Select One

Forward
Reverse
More

	Start	Stop	Loads	Speed	Crossed	Start	End	Feet	T.Oil
1	2L	2R	0	26	0	46.0	40.0	-6.0	0
2	13L	13R	3	18	45	40.0	32.4	-7.6	2250
3	12L	12R	3	18	51	32.4	24.8	-7.6	2550
4	11L	11R	3	18	57	24.8	17.2	-7.6	2850
5	10L	10R	2	14	42	17.2	13.3	-3.9	2100
6	9L	9R	2	10	46	13.3	10.5	-2.8	2300
7	2L	2R	0	10	0	10.5	0.0	-10.5	0

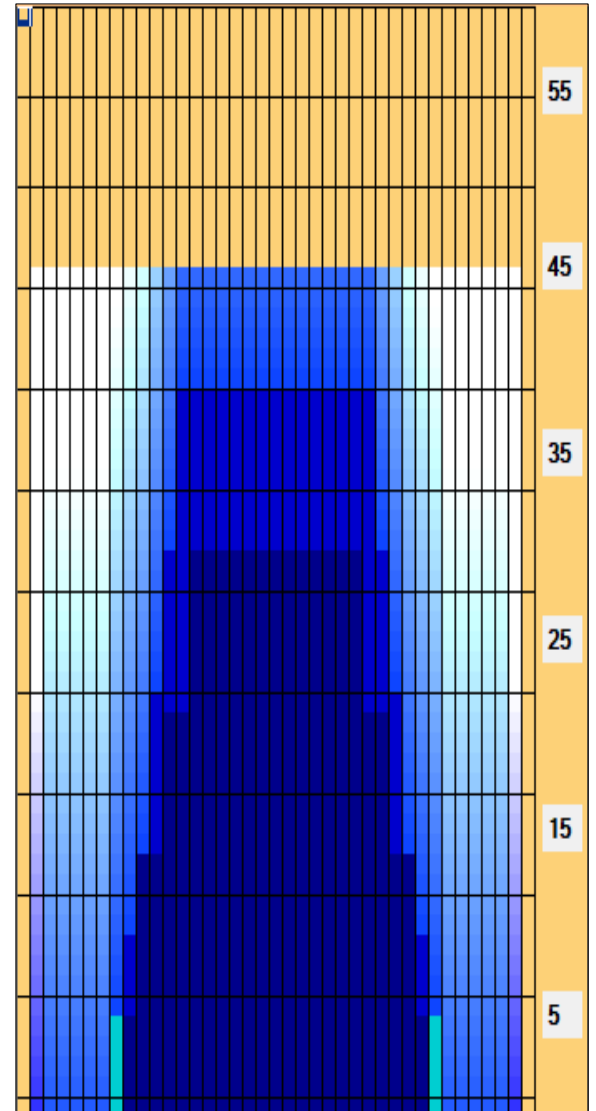
Forward
Reverse
More

Forward

Reverse

Combined

Buff



Item	3L-7L:18L-18R	8L-12L:18L-18R	13L-17L:18L-18R	18L-18R:17R-13R	18L-18R:12R-8R	18L-18R:7R-3R
Description	Outside Track:Middle	Middle Track:Middle	Inside Track:Middle	Middle: Inside Track	Middle:Middle Track	Middle:Outside Track
Track Zone Ratio	13.5	2.25	1.02	1.02	2.25	13.5

