

2023.04コンディション



Oil Pattern Distance: 47 Feet	Reverse Brush Drop: 47 Feet	Oil Per Board: 50 uL
Forward Oil Total: 15.95 mL	Reverse Oil Total: 10.95 mL	Volume Oil Total: 26.9 mL
Forward Boards Crossed: 319 Boards	Reverse Boards Crossed: 219 Boards	Total Boards Crossed: 538 Boards

	Start	Stop	Loads	Speed	Crossed	Start	End	Feet	T.Oil
1	3L	3R	4	14	140	0.0	5.9	5.9	7000
2	11L	11R	3	18	57	5.9	13.5	7.6	2850
3	12L	12R	3	18	51	13.5	21.1	7.6	2550
4	13L	13R	3	22	45	21.1	30.4	9.3	2250
5	14L	14R	2	26	26	30.4	37.7	7.3	1300
6	2L	2R	0	30	0	37.7	47.0	9.3	0

Navigation: Forward Reverse More

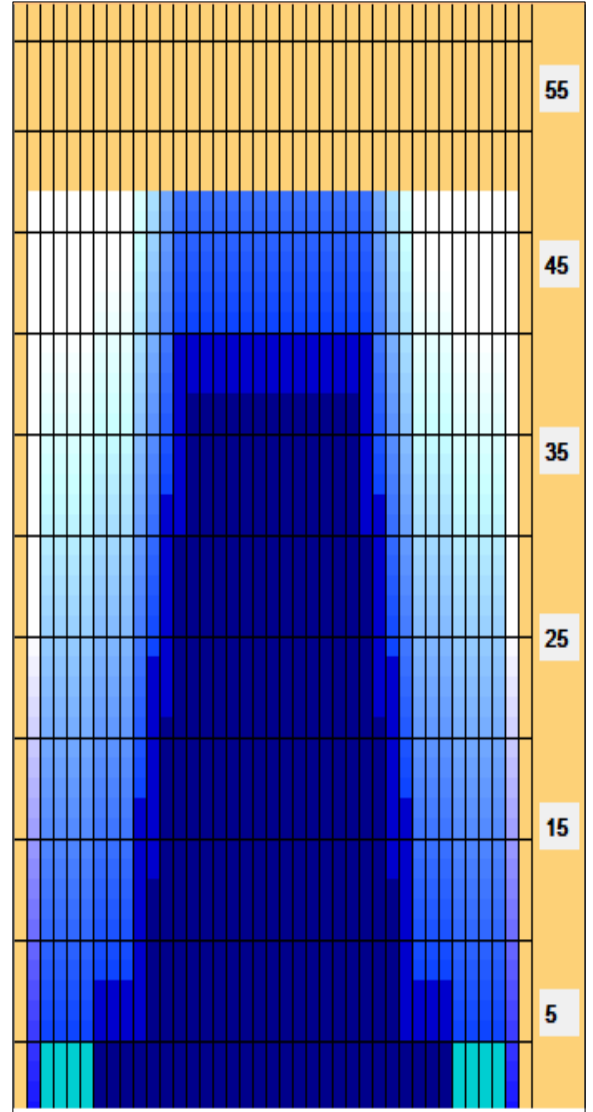
	Start	Stop	Loads	Speed	Crossed	Start	End	Feet	T.Oil
1	2L	2R	0	30	0	47.0	40.0	-7.0	0
2	13L	13R	2	30	30	40.0	31.5	-8.5	1500
3	12L	12R	2	26	34	31.5	24.2	-7.3	1700
4	11L	11R	2	26	38	24.2	16.9	-7.3	1900
5	10L	10R	3	22	63	16.9	7.6	-9.3	3150
6	7L	7R	2	18	54	7.6	2.5	-5.1	2700
7	2L	2R	0	14	0	2.5	0.0	-2.5	0

Navigation: Forward Reverse More

Conditioner:
Type In or Select One

TransferType:
Type In or Select One

- Forward
- Reverse
- Combined
- Buff



Item	3L-7L:18L-18R	8L-12L:18L-18R	13L-17L:18L-18R	18L-18R:17R-13R	18L-18R:12R-8R	18L-18R:7R-3R
Description	Outside Track:Middle	Middle Track:Middle	Inside Track:Middle	Middle: Inside Track	Middle:Middle Track	Middle:Outside Track
Track Zone Ratio	5.91	2.41	1.02	1.02	2.41	5.91

