

# 2022.10 デイリーコンディション



|   |   |   |
|---|---|---|
| <b>Oil Pattern Distance:</b> 44 Feet      | <b>Reverse Brush Drop:</b> 44 Feet        | <b>Oil Per Board:</b> 50 uL             |
| <b>Forward Oil Total:</b> 16.6 mL         | <b>Reverse Oil Total:</b> 10.6 mL         | <b>Volume Oil Total:</b> 27.2 mL        |
| <b>Forward Boards Crossed:</b> 332 Boards | <b>Reverse Boards Crossed:</b> 212 Boards | <b>Total Boards Crossed:</b> 544 Boards |

|   | Start | Stop | Loads | Speed | Crossed | Start | End  | Feet | T.Oil |
|---|-------|------|-------|-------|---------|-------|------|------|-------|
| 1 | 4L    | 4R   | 1     | 14    | 33      | 0.0   | 0.0  | 0.0  | 1650  |
| 2 | 6L    | 6R   | 1     | 14    | 29      | 0.0   | 1.9  | 1.9  | 1450  |
| 3 | 7L    | 7R   | 2     | 18    | 54      | 1.9   | 7.0  | 5.1  | 2700  |
| 4 | 8L    | 8R   | 2     | 18    | 50      | 7.0   | 12.1 | 5.1  | 2500  |
| 5 | 9L    | 9R   | 3     | 18    | 69      | 12.1  | 19.7 | 7.6  | 3450  |
| 6 | 10L   | 10R  | 3     | 22    | 63      | 19.7  | 29.0 | 9.3  | 3150  |
| 7 | 12L   | 12R  | 2     | 26    | 34      | 29.0  | 36.3 | 7.3  | 1700  |
| 8 | 2L    | 2R   | 0     | 10    | 0       | 36.3  | 44.0 | 7.7  | 0     |

Navigation: Forward Reverse More

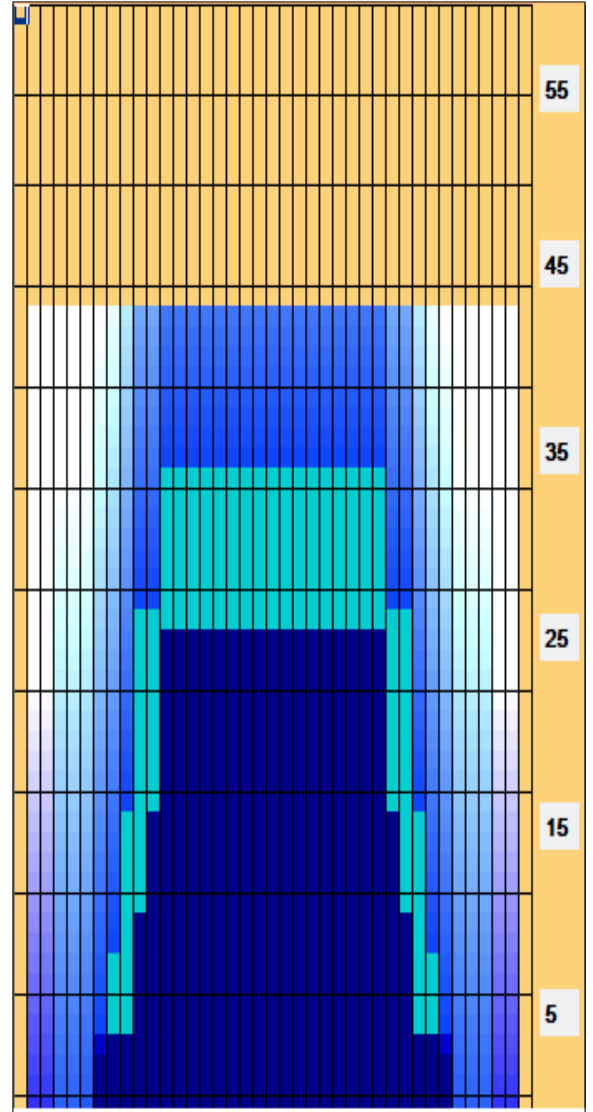
|   | Start | Stop | Loads | Speed | Crossed | Start | End  | Feet  | T.Oil |
|---|-------|------|-------|-------|---------|-------|------|-------|-------|
| 1 | 2L    | 2R   | 0     | 30    | 0       | 44.0  | 28.0 | -16.0 | 0     |
| 2 | 12L   | 12R  | 3     | 22    | 51      | 28.0  | 18.7 | -9.3  | 2550  |
| 3 | 11L   | 11R  | 2     | 18    | 38      | 18.7  | 13.6 | -5.1  | 1900  |
| 4 | 10L   | 10R  | 2     | 18    | 42      | 13.6  | 8.5  | -5.1  | 2100  |
| 5 | 7L    | 7R   | 3     | 14    | 81      | 8.5   | 2.6  | -5.9  | 4050  |
| 6 | 2L    | 2R   | 0     | 10    | 0       | 2.6   | 0.0  | -2.6  | 0     |

Navigation: Forward Reverse More

Conditioner:  
Type In or Select One

TransferType:  
Type In or Select One

- Forward
- Reverse
- Combined
- Buff



| Item             | 3L-7L:18L-18R        | 8L-12L:18L-18R      | 13L-17L:18L-18R     | 18L-18R:17R-13R      | 18L-18R:12R-8R      | 18L-18R:7R-3R        |
|------------------|----------------------|---------------------|---------------------|----------------------|---------------------|----------------------|
| Description      | Outside Track:Middle | Middle Track:Middle | Inside Track:Middle | Middle: Inside Track | Middle:Middle Track | Middle:Outside Track |
| Track Zone Ratio | 10.91                | 1.48                | 1                   | 1                    | 1.48                | 10.91                |

